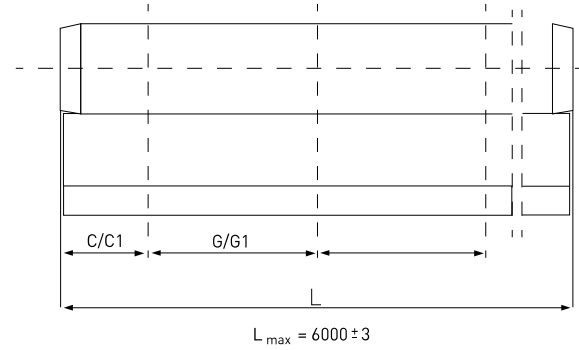
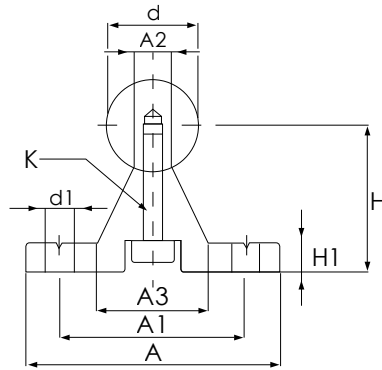


FTSN

Shaft support rail units



Dimension (mm)

weight

Type	Ø d	A	H ±0,2	A2	A3	H1	A1	d1	C	C1	G	G1	K	Gew Kg
FTSN-12	12	40	22	5.4	15	5	29	4.5	37.5	60	75	120	M4X20	0.52
FTSN-16	16	45	26	7	19	5	33	5.5	50	75	100	150	M5X20	0.64
FTSN-20	20	52	32	8.1	23	6	37	6.6	50	75	100	150	M6X25	0.90
FTSN-25	25	57	36	10.3	26	6	42	6.6	60	100	120	200	M8X30	1.08
FTSN-30	30	69	42	11	29	7	51	9	75	100	150	200	M10X35	1.43
FTSN-40	40	73	50	11	36	8	55	9	100	150	200	300	M10X40	1.81
FTSN-50	50	84	60	19	40	9	63	11	100	150	200	300	M12X45	2.45

Bestellbeispiel / Ordering designation

FTSN - 25 - G



- weight without shaft
- depending on the length of the support shaft rail unit, the rail may be composed of several individual sections
- C, C1, Distance from the center of the first/last hole to the edge
- Other pitch distance on request

FTSN - 25 - W - 500

